

Importing Frame Sections into ETABS



Abstract:

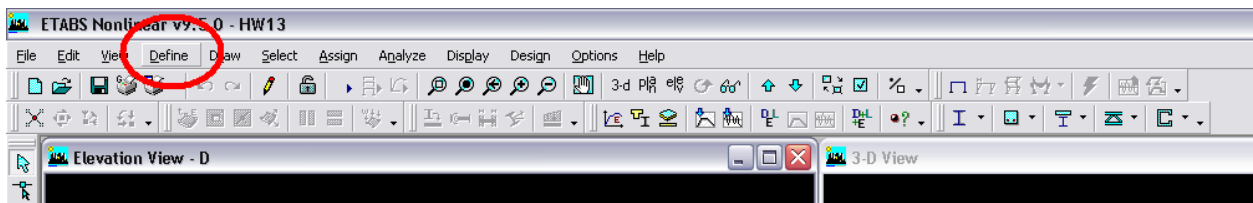
This document will provide a step-by-step process to import frame sections that are not in the ETABS database into the system for design.

Problem:

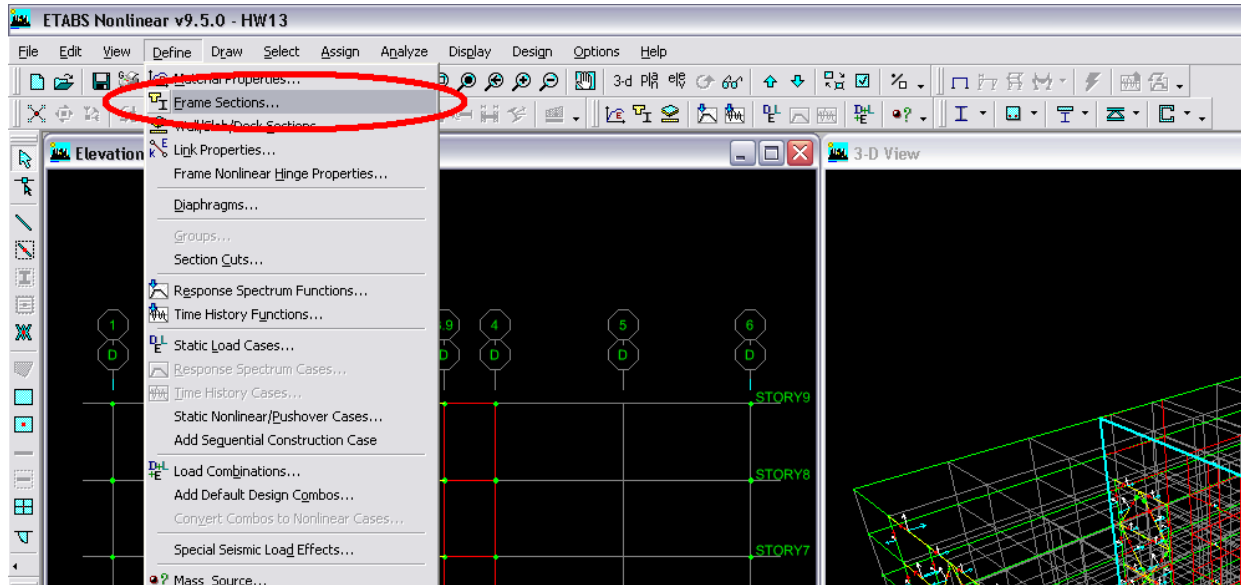
ETABS supplies a large amount of frame sections in its frame section database. However, it does not have all of the sections that a designer may need.

Solution:

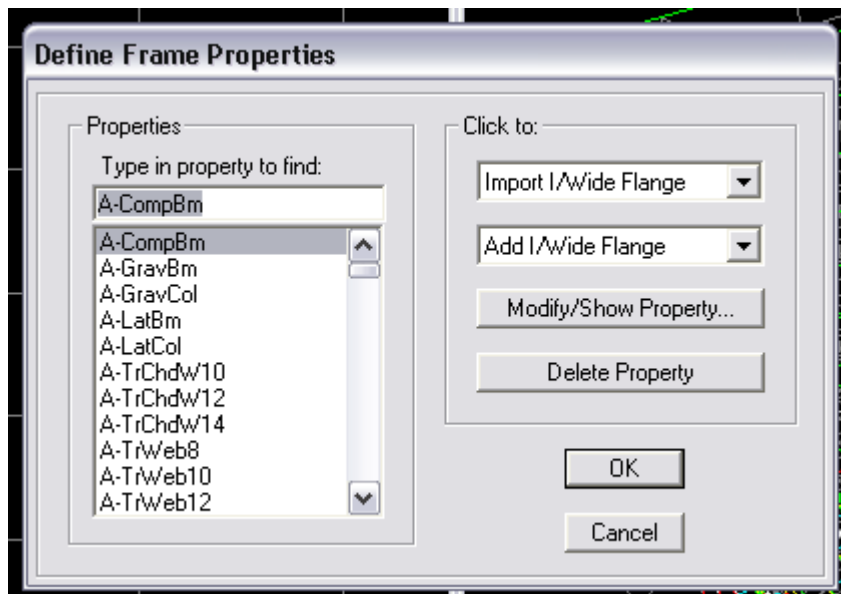
1. To check if the needed frame section is in the database, go to the “Define” tab on the top toolbar.



2. Select “Frame Sections” in the dropdown menu.

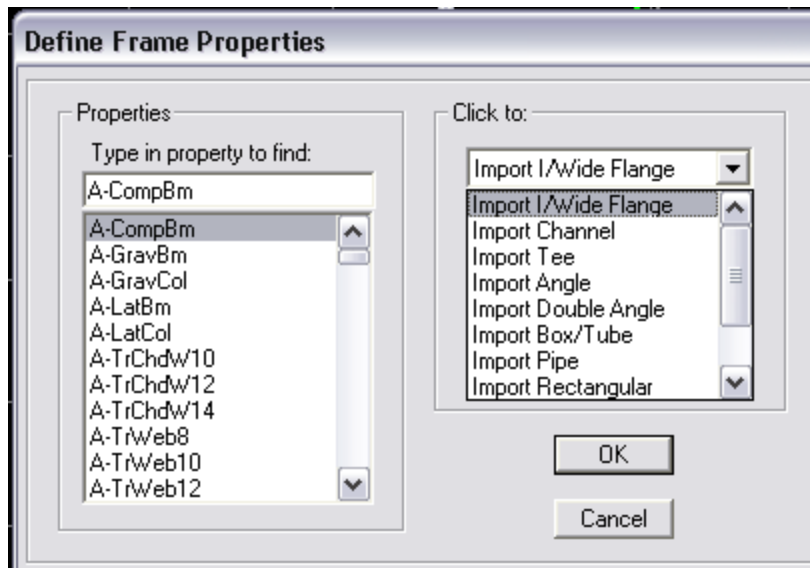


3. Scroll through on the left side to see if the member is there already.

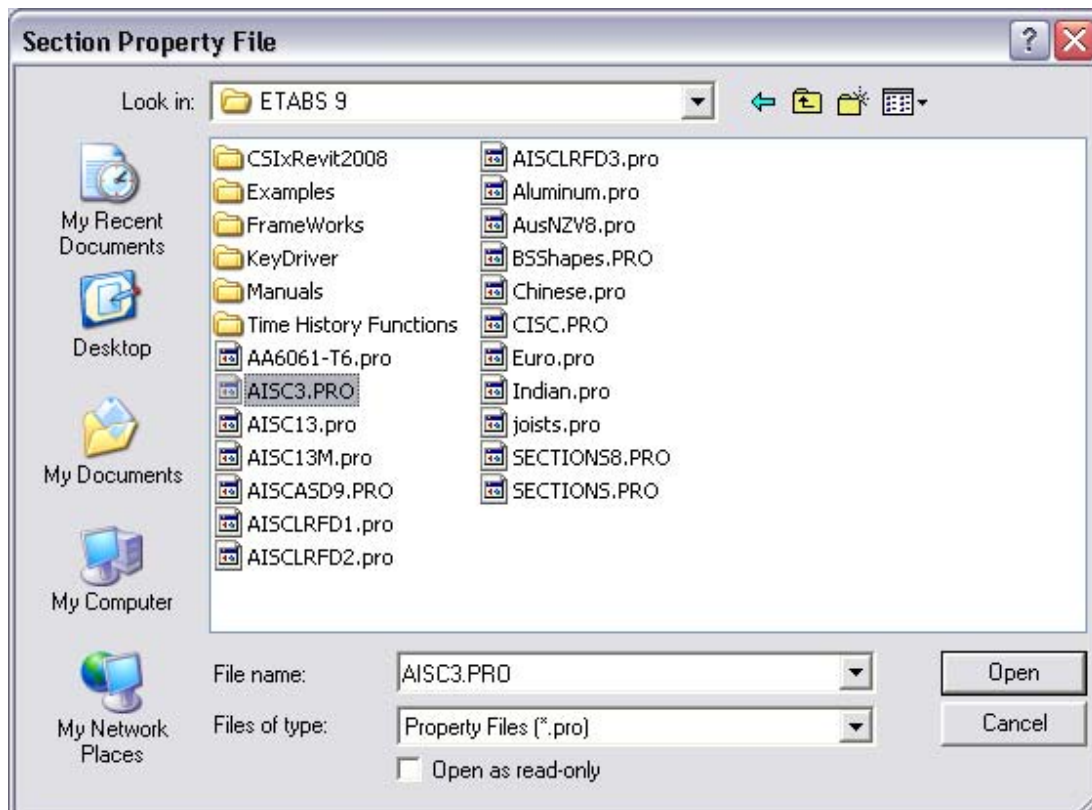


- a. If the member is there then proceed with the design.
- b. If the member can be imported from another file proceed to step 4.
- c. If the section properties of the member are known then proceed to step 6.

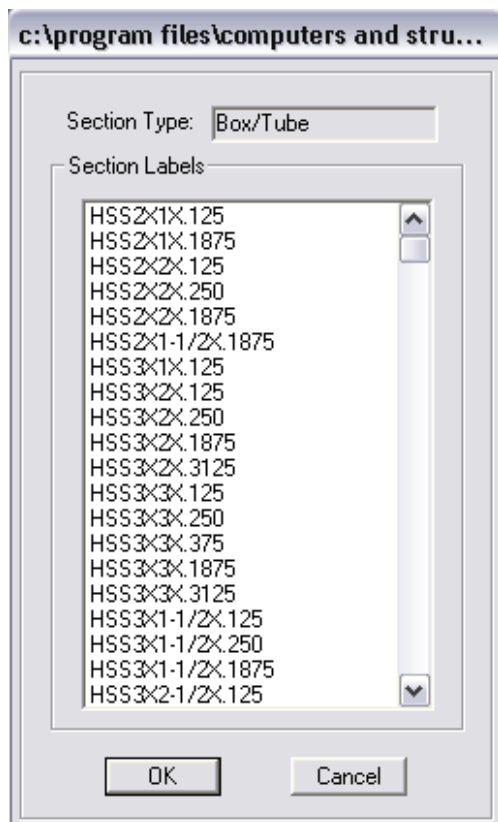
4. On the top right menu select “Import_____” and select which type of member is needed.



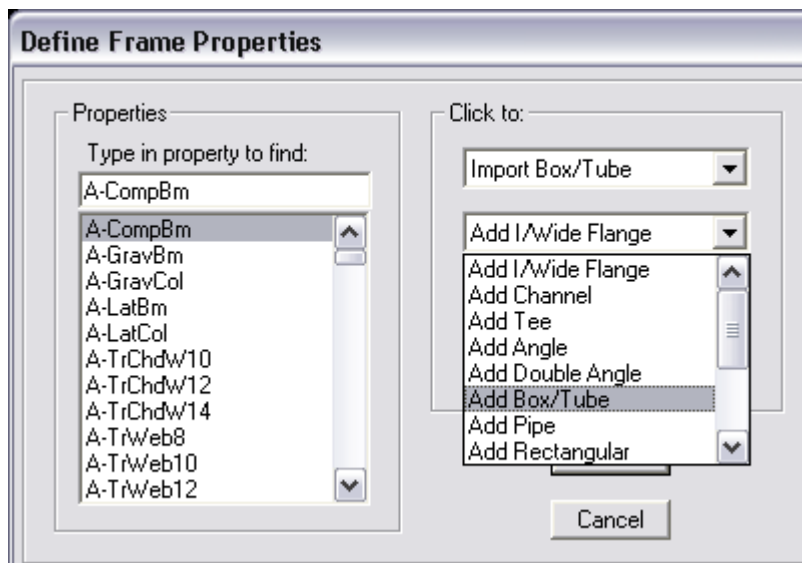
5. This will bring you to file where the proper member must be located.
 - a. If the member can be located, import and proceed with design.



Note: Knowing where this file may be on the computer is critical in this step. If not, proceed.



- b. If the member cannot be located and section properties are known then proceed to step 6.
6. Below the “Import_____” button is the “Add_____” button. Select which member needs to be added.



7. Fill in dimensions and section properties.

Box/Tube Section

Section Name FSEC1

Properties: Property Modifiers: Material: STEEL

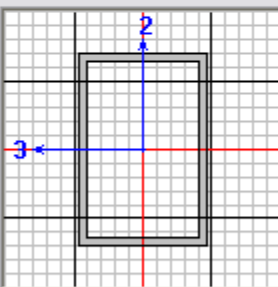
Dimensions:


Outside depth (t3) 6.

Outside width (t2) 4.

Flange thickness (tf) 0.25

Web thickness (tw) 0.25



Display Color 

8. Continue with design.

